

„energy unites culture“



Welcome in Spišská Nová Ves  
21.10. - 25.10.2013





# Teamclassification



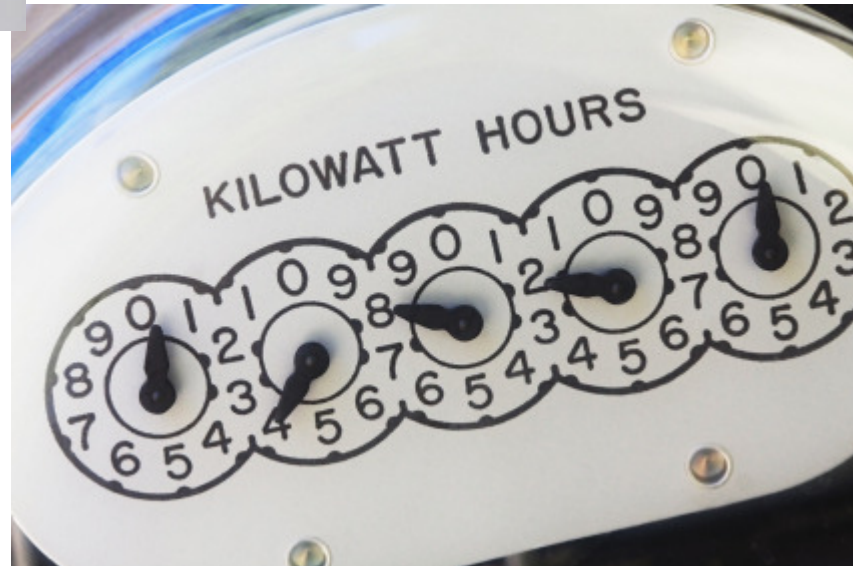
# Everybody is using energy

Every group has to answer the follow questions on a flipchart:

## What kind of energy are you using during the day?

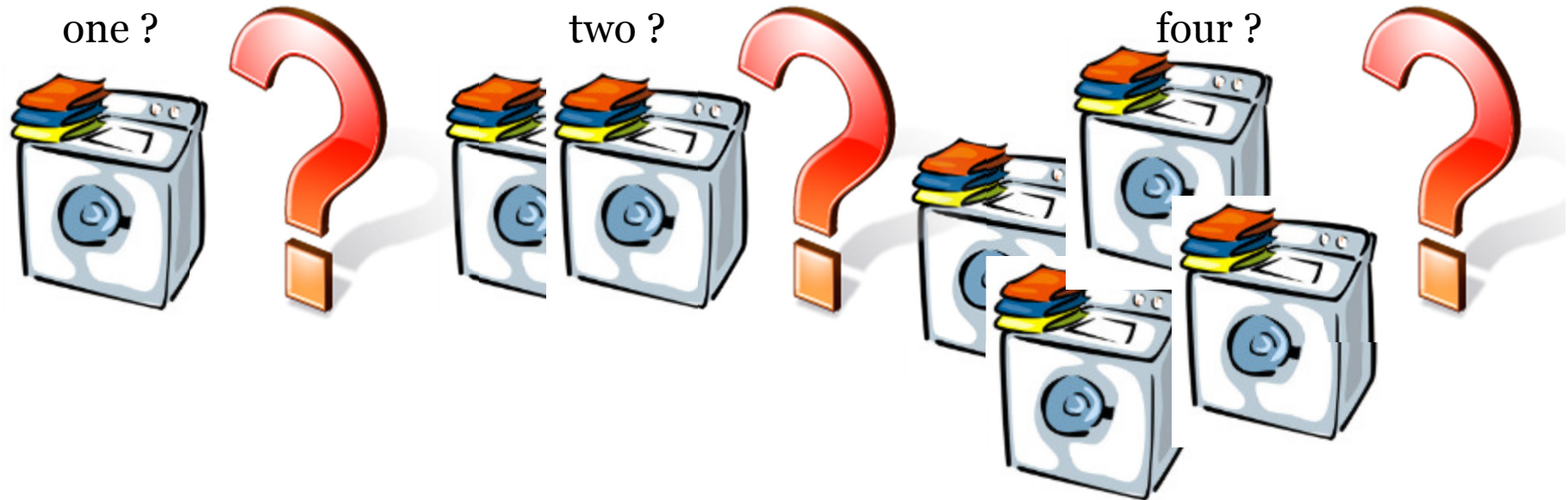


We all need electric



# What can we do with 1 Kilowatthour?

How many machines of shirts, trousers,... You can wash with 1 kWh



# What can we do with 1 Kilowatthour?

How many hours you can work with a vacuum cleaner with 1 KWH

120 min?



250 min ?



60 min?



# What can we do with 1 Kilowatthour?

For how many persons you can cook a lunch on the electric cooker with 1 KWH

2 persons



6 persons?



4 persons?





# What can we do with 1 Kilowatthour?

How many cups of coffee you can make with 1 KWH ?

20 cups of coffee



70 cups of coffee



30 cups of coffee



60 cups of coffee



40 cups of coffee



50 cups of coffee



# What can we do with 1 Kilowatthour?

How many toasts can be toastet with 1 KWH ?

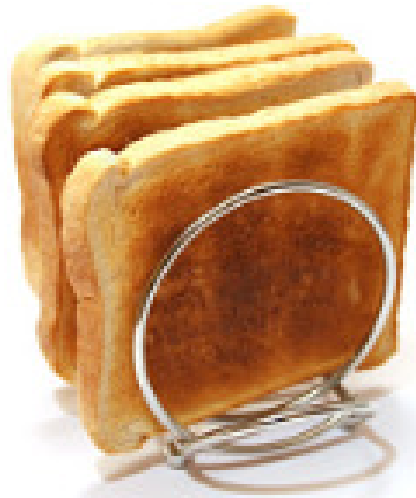
50 toast bread



125 toast bread



133 toast bread



279 toast bread



255 toast bread



180 toast bread



# What can we do with 1 Kilowatthour?

How many hours you can watch 1 KWH ?

2 hours ?

5 hours ?



13 hours ?

11 hours ?

7 hours ?

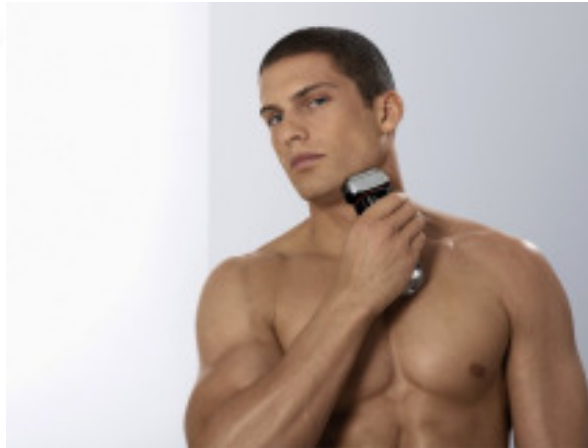
9 hours ?

# What can we do with 1 Kilowatthour?

How many men can shave themselves with 1 KWH ?

500 men ?

1000 men ?



3000 men ?


2500 men ?

1500 men ?

2000 men ?

# What can we do with 1 Kilowatthour?

How long you can use a 1000 Watt-hair-foehn?



A central photograph shows a woman with long blonde hair using a black hair dryer. She is holding the dryer to her hair and has her hand on top of her head. The background is plain white.

30 min ?

40 min ?

50 min ?

60 min ?

90 min ?

100 min ?

# What can we do with 1 Kilowatthour?

Computer - Laptop - Tablet - PC - who uses most electric current?



How many electric current they use – in normal mode and standby-mode ?  
How many electric current are you using in one „school-year“?  
What can you do to save electricity?

How long must you drive with a bycircle to produce 100 Watt?



## Let's go on

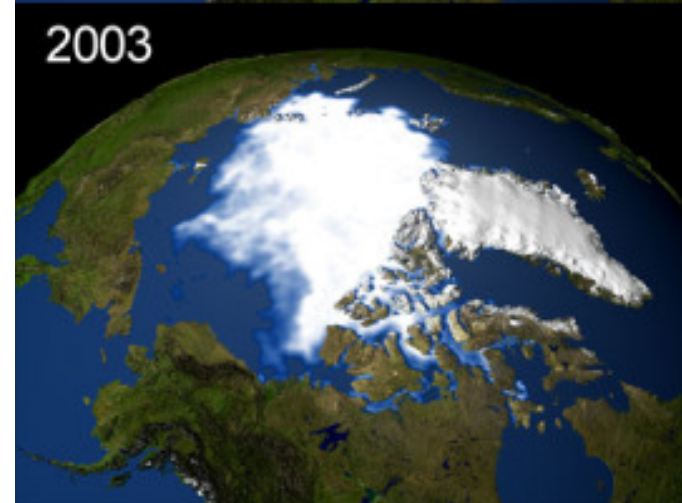
- Every team has to produce 100 Watt by bicycle
- Every team has stop the time.





# What is going on when we don't protect the world

- What is the message from the pictures?





.. it becomes warmer....

	Summer 2013	Summer 2050
Tabor		+4°
Spisska Nova Ves		+4°
Skofja Loka		+4°
Oroslavje		+4°
Bielawa		+4°
Kocaeli		+4°
Weiden		+4



# What can you do to save the resources?

in your private life



in your school-life



in your work-life





energy

unites

cultures